

TA20

series



Product Segments

- **Ergo Motion**

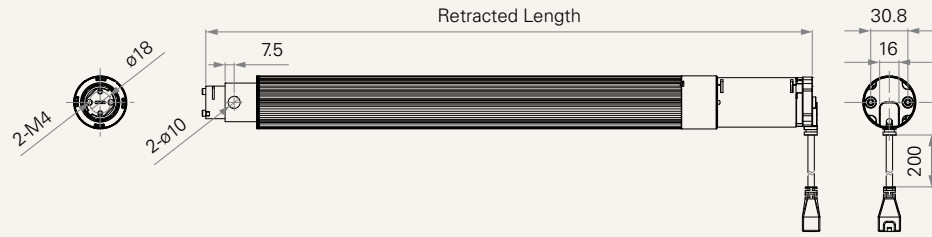
The TA20 is a 3 stage inline actuator which combines long stroke length with minimum installation dimension. This actuator is suitable for various customized lifting columns in height adjustable furniture, particularly with the need for a slim and neat structure. The TA20 is built for reliable use in modern office and home environments. An excellent choice for manufacturers seeking a slim, three-stage actuator.

General Features

Max. load	700N (push)
Max. speed at max. load	38mm/s
Max. speed at no load	63mm/s
Retracted length	$\geq (\text{Stroke}/2) + 177\text{mm}$
Stroke	50~800mm
Output signals	Hall sensors
Operational temperature range	+5°C~+45°C
Suitable for 3-stage desk columns	

Drawing

Standard Dimensions
(mm)



Load and Speed

CODE	Rated Load (N)	Typical Current (A)		Typical Speed (mm/s)	
		No Load 29V DC	With Load 29V DC	No Load 29V DC	With Load 29V DC
Motor Speed (5200RPM, Duty Cycle 10%)					
B	600	≤ 1.8	≤ 4.8	63	45
C	700	≤ 1.8	≤ 5.0	48	38

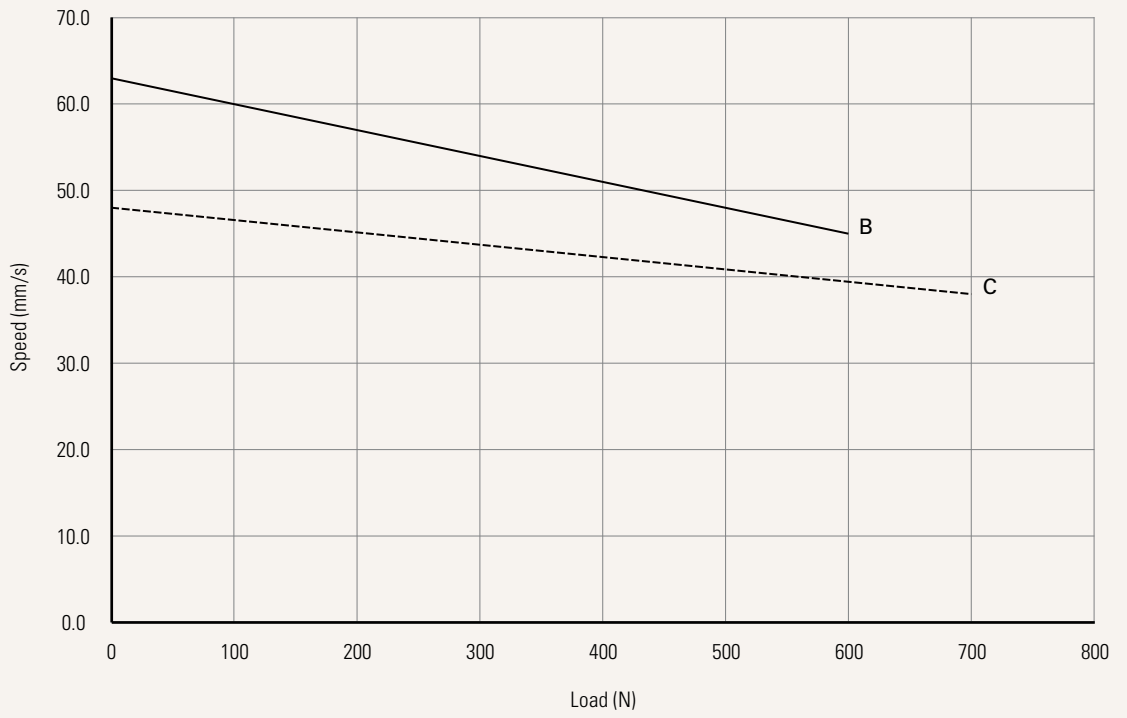
Note

- 1 The TA is designed especially for push applications, not suitable for pull applications.
- 2 This self-locking force level is reached only when a short circuit is applied on the terminals of the motor. All the TiMOTION control boxes have this feature built-in.
- 3 Please refer to the approved drawing for the final authentic value.

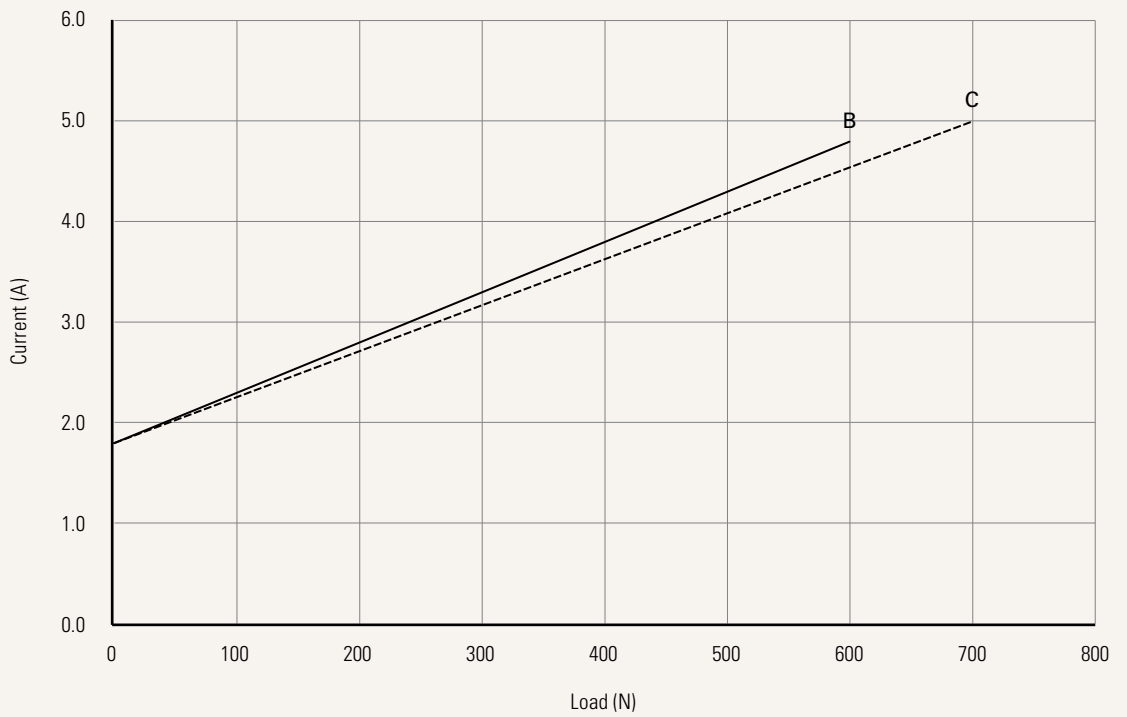
Performance Data (24V DC Motor)

Motor Speed (5200RPM, Duty Cycle 10%)

Speed vs. Load



Current vs. Load

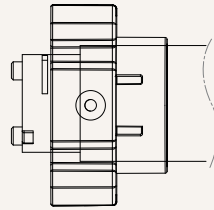
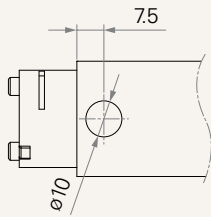


Load and Speed	See page 2		
Stroke (mm)	50-800		
Retracted Length (mm)	Minimum retracted length needs to $\geq (\text{stroke} / 2) + 177$		
Fixation of Mid-Tube (mm)	1 = Hole ($\varnothing 10.0$)	2 = Fixation bracket	
	See page 5		
Front Attachment (mm)	2 = Plastic		
	See page 5		
Output Signals	2 = Hall sensor * 2, standard		
Connector	H = Molex 6P, socket		
	See page 5		
Cable Length (mm)	1 = Straight, 200		
	See page 5		
Extension Cable Connector	1 = Molex 6 pin (plug) to Molex 8 pin (plug), 180° plug, standard		
	See page 6		
Extension Cable Length (mm)	1 = Straight, 500	3 = Straight, 1000	4 = Straight, 1500
	See page 6		

Fixation of Mid-Tube (mm)

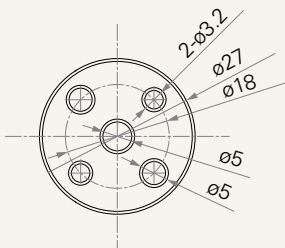
1 = Hole ($\varnothing 10.0$)

2 = Fixation bracket



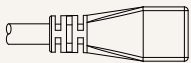
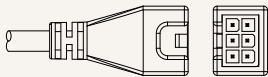
Front Attachment (mm)

2 = Plastic

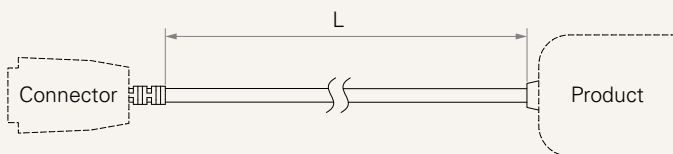


Connector

H = Molex 6P, socket



Cable Length

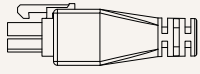


Cable Section (mm)

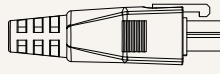
CODE	L
1	200

Extension Cable Connector

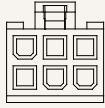
1 = Molex 6 pin (plug) to Molex 8 pin (plug), 180° plug, standard



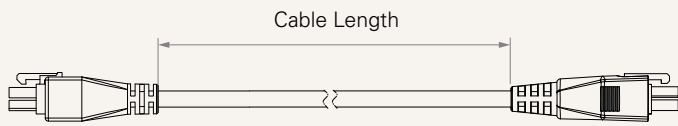
Molex 6 pin, plug



Molex 8 pin, plug



Extension Cable Length



Terms of Use

The user is responsible for determining the suitability of TiMOTION products for a specific application. TiMOTION products are subject to change without prior notice.