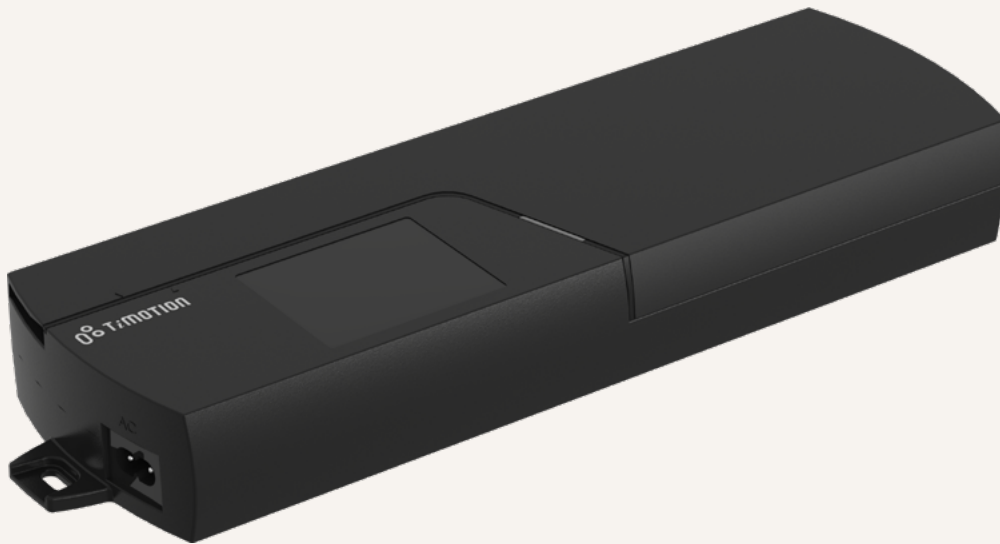


TC22

series



Product Segments

• Ergo Motion

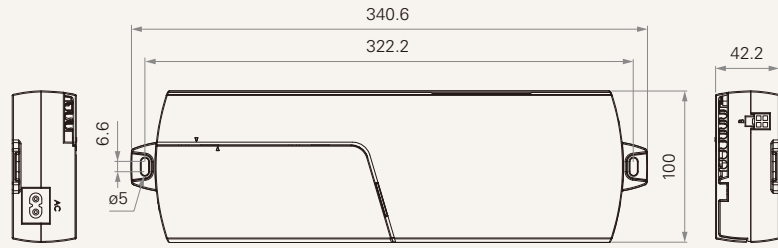
With 4 motor-driving channels and 2 hand control interfaces, the TC22 is suitable for a wide range of ergonomic height-adjustable table applications. It incorporates all the appealing features, such as built-in t-touch sensor, Bluetooth, external battery option, and 0.1W low standby power. The TC22's unique grooving system and slidable cover allow users to manage and conceal all cables to optimize space while maintaining a tidy look.

General Features

Number of motors	1~4
Number of controls	1~2
Max. output	5.5A
Options	Supports t-touch/bluetooth built-in, charging accessory and external battery
Input Voltage	100-240V DC
Built-in transformer type	SMPS
Plug support	EU, USA, AUS, UK, or JPN
Color	Black
0.1W standby power consumption	
Compact design for height adjustable desks	

Drawing

Standard Dimensions
(mm)



TC22

Version: 20200616-B

Transformer	N = SPM-180Q (32V/5.5A + 5V/100mA, 0.1W standby power, quick start, 100-240V)		
Plug	1 = EU 2 = US	3 = AU 4 = UK	5 = JP
Color	1 = Black		
AC Cable Length (mm)	1 = Straight, 1500	2 = Straight, 2000	3 = Straight, 4000
Control Board	2 = With MCU 3 = With MCU, Bluetooth enabled	4 = With MCU, with T-Touch 5 = With MCU, Bluetooth enabled, with T-Touch	
Logo (Silkscreen)	0 = Without	1 = TiMOTION	A = Customized

Note

1 TC22 requires 90° plugs. Please select 90° plug directly for motor and hand control; or place additional 180° to 90° cable.

Terms of Use

The user is responsible for determining the suitability of TiMOTION products for a specific application. TiMOTION products are subject to change without prior notice.