



Enjoy More Flexibility,
Customized Products,
and Tailor-Made Services

COMFORT MOTION



99%

of TiMOTION's customer application requirements can be solved by our experienced personnel providing highly customized solutions.

101%

TiMOTION guarantees complete customer satisfaction by providing a competitive packaged actuator solution coupled with a wide range of high-quality products, global service networks and "on-demand" R&D resources.

Linear Actuators

TA series



TA4



Max. load
3,500N (push)
2,000N (pull)

Max. speed at max. load
3.1mm/s

Max. speed at no load
36.9mm/s

Retracted length
≥ Stroke + 140mm



TA5L



Max. load
1,200N (push)

Max. speed at max. load
20.8mm/s

Max. speed at no load
43.2mm/s

Retracted length
≥ 157mm



TA5P



Max. load
6,000N (push)
3,000N (pull)

Max. speed at max. load
4.1mm/s

Max. speed at no load
58mm/s

Retracted length
≥ 157mm



TA6

Max. load

6,000N (push)
4,000N (pull)

Max. speed at max. load

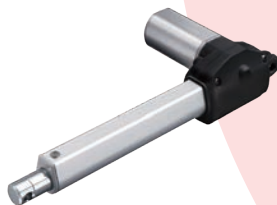
5mm/s

Max. speed at no load

39mm/s

Retracted length

≥ Stroke + 163mm



TA9

Max. load

2,500N (push)
1,000N (pull)

Max. speed at max. load

5.1mm/s

Max. speed at no load

58.3mm/s

Retracted length

≥ Stroke + 140mm



TA14

Max. load

6,000N (push)
4,000N (pull)

Max. speed at max. load

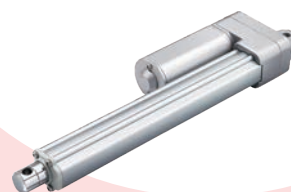
4.1mm/s

Max. speed at no load

39mm/s

Retracted length

≥ Stroke + 163mm



TA16

Max. load

3,500N (push/pull)

Max. speed at max. load

6.2mm/s

Max. speed at no load

23.5mm/s

Retracted length

≥ Stroke + 112mm



Linear Actuators

TA series



TA19



Max. load
1,000N (push)

Max. speed at max. load
18mm/s

Max. speed at no load
64mm/s

Retracted length
 $\geq \text{Stroke}/2 + 165\text{mm}$



TA25



Max. load
1,000N (push/pull)

Max. speed at max. load
29mm/s

Max. speed at no load
54mm/s

Retracted length
 $\geq 99\text{mm}$



TA26



Max. load
4,000N (push)
2,000N (pull)

Max. speed at max. load
6.1mm/s

Max. speed at no load
24mm/s

Retracted length
 $\geq \text{Stroke} + 120\text{mm}$



TA27



Max. load
750N (push/pull)

Max. speed at max. load
32mm/s

Max. speed at no load
53mm/s

Retracted length
120 or 175mm (depending on
chosen fixation type)



TA32



Max. load
500N (push)

Max. speed at max. load
4.8mm/s

Max. speed at no load
16mm/s

Retracted length
≥ 143mm



TA38



Max. load
1,500N (push/pull)

Max. speed at max. load
7.9mm/s

Max. speed at no load
12.5mm/s

Retracted length
≥ 160mm

Linear Actuators

TA series



TA42

NEW

Max. load
1,500N (push/pull)

Max. speed at max. load
7.1mm/s

Max. speed at no load
13.3mm/s

Retracted length
≥ Stroke + 100mm



TA43



Max. load
4,000N (push/pull)

Max. speed at max. load
2.5mm/s

Max. speed at no load
12.1mm/s

Retracted length
≥ Stroke + 100mm



TA48



Max. load
500N (push)

Max. speed at max. load
45mm/s

Max. speed at no load
64mm/s

Retracted length
≥ Stroke + 360mm

Lifting Columns

TL series



TL18



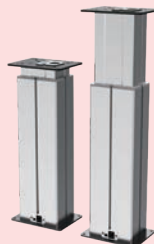
Max. load & self-locking force
4,500N (push)

Max. dynamic bending moment
250Nm

Max. speed at max. load
6.6mm/s

Max. speed at no load
45mm/s

Retracted length
≥ Stroke + 147mm



TL18AC



Max. load & self-locking force
4,500N (push)

Max. dynamic bending moment
250Nm

Max. speed at max. load
6.6mm/s

Max. speed at no load
45mm/s

Retracted length
≥ Stroke + 183mm



TVL3



Max. load
600N (push)

Max. speed at max. load
22mm/s

Max. speed at no load
32mm/s

Retracted length
570mm

Control Boxes



TC6 Series

- Number of motors: 1~5



TC7 Series

- Number of motors: 1~2



TC11 Series

- Number of motors: 1
- Max. output: 32V DC, 2.5A



TC14 Series

- Number of motors: 1~4



TC15 Series

- Number of motors: 2
- Max. output: 32V DC, 4A



TC16 Series

- Number of motors: 3
- Max. output: 32V DC, 4A



TC23 Series

- Number of motors: 1~4



Back-Up Power



TBB2 Series

- Battery type: Lead acid, Lithium
- Capacity: 1.2Ah
- Discharging voltage: 24V DC, 1.2A



TBB3 Series

- Battery type: Lithium-ion
- Capacity: 1.8Ah
- Discharging voltage: 25.2V DC, 1.8A



TBB4 Series

- Battery type: Lead acid
- Capacity: 1.2 or 2Ah
- Discharging voltage: 24V DC, 2A



TBB5 Series

- Battery type: Lithium iron
- Capacity: 4Ah
- Discharging voltage: 25.6V DC, 4A



TBB6 Series

- Battery type: Lead acid
- Capacity: 2.9 or 5Ah
- Discharging voltage: 24V DC, 2.9 / 5A



TBB7 Series

- Battery type: Lead acid
- Capacity: 2.9 or 5Ah
- Discharging voltage: 24V DC, 2.9 / 5A



TBB8 Series

- Battery type: Lithium
- Capacity: 1.5Ah
- Discharging voltage: 24V DC, 1.5A



Power Supplies



TP2 Series

- Transformer type: SMPS
- Input voltage: 100~240V AC
- Max. output: 29V DC, 2.5A



TP2N Series

- Transformer type: SMPS
- Input voltage: 100~240V AC
- Max. output: 29V DC, 2.5A



TP2P Series

- Transformer type: SMPS
- Input voltage: 100~240V AC
- Max. output: 29V DC, 2.0A



TP5P Series

- Transformer type: SMPS
- Input voltage: 100~240V AC
- Max. output: 29V DC, 2A



TP7 Series

- Transformer type: SMPS
- Input voltage: 100~240V AC
- Max. output: 29V DC, 1.5A



TP11 Series

- Transformer type: SMPS
- Input voltage: 100~240V AC
- Max. output: 29V DC, 1.8A



Hand Controls



TH1



TH3



TH4



TH5



TH6



TH7



TH7R



TH8



TH9



TH11



TH13



TH15

Hand Controls



TH16



TH17



TH19



TH23



TH25



T FH2



TFH3



TFH4



TFH5



TFH6



TFH7



TFH7P

Hand Controls



TFH7S



TFH11



TFH15



TFH15P



TFH16



TFH17



TFH22



TFH25



TFH27



TFH28



NEW

TFH30



NEW

TFH34



Accessories



TBC
Battery Charger



TCR
AC Cable Reel



TES
External Switch



TFA1
USB Chargers



TFA3
USB Chargers



Accessories



TJB2
Junction Box



TJB10
Junction Box



TMM
Massage Motor



TMM2
Massage Motor



TMM3
Massage Motor



TMM4
Massage Motor



TRF
RF Receiver



TRL1
LED Reading Light



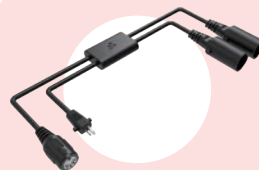
TSS
Safety Strip



TYC
Y Cable



TYC2
Y Cable



TYC3
Y Cable



Terms of Use

The user is responsible for determining the suitability of TiMOTION products for a specific application. TiMOTION takes great care in providing accurate and up-to-date information on its products. However, due to continuous development, frequent modifications and changes to products may occur without prior notice. It is for this reason that TiMOTION cannot guarantee the correct and actual status of said information on its products, nor can it guarantee the availability of any particular product.

Therefore, TiMOTION reserves the right to discontinue the sale of any product displayed on its website or listed in its catalogues or other written material produced by TiMOTION.

For the most accurate and up-to-date information on our products, please visit TiMOTION's website.

www.timotion.com



Every Day is Earth Day

TiMOTION uses FSC certificated paper in order to help care for our forests, as well as the people and wildlife who call them home.

**Taiwan & China**

sales.tw@timotion.com
tel 886 2 2219 6633

Europe

sales.eu@timotion.com
tel 33 (0)1 74 82 50 51

Japan

sales.jp@timotion.com
tel 81 6 6713 1188

USA

sales.us@timotion.com
tel (855)235 1424

Korea

sales@timotion.co.kr
tel 82 31 745 1060

Latin America

sales.la@timotion.com
tel 55 (11) 5081 5011

Australia

sales.tw@timotion.com
tel 61 3 8725 0331



For the latest
product information

Updated: Aug 2020