

TEK09

series



Product Segments

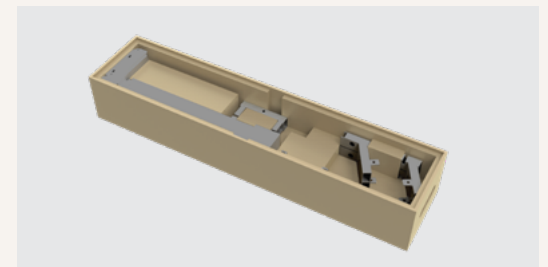
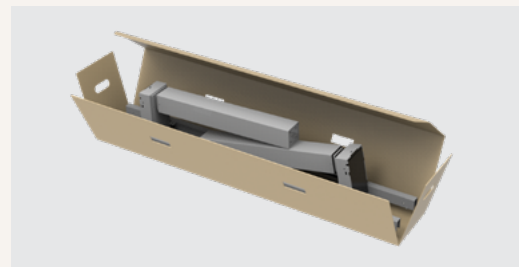
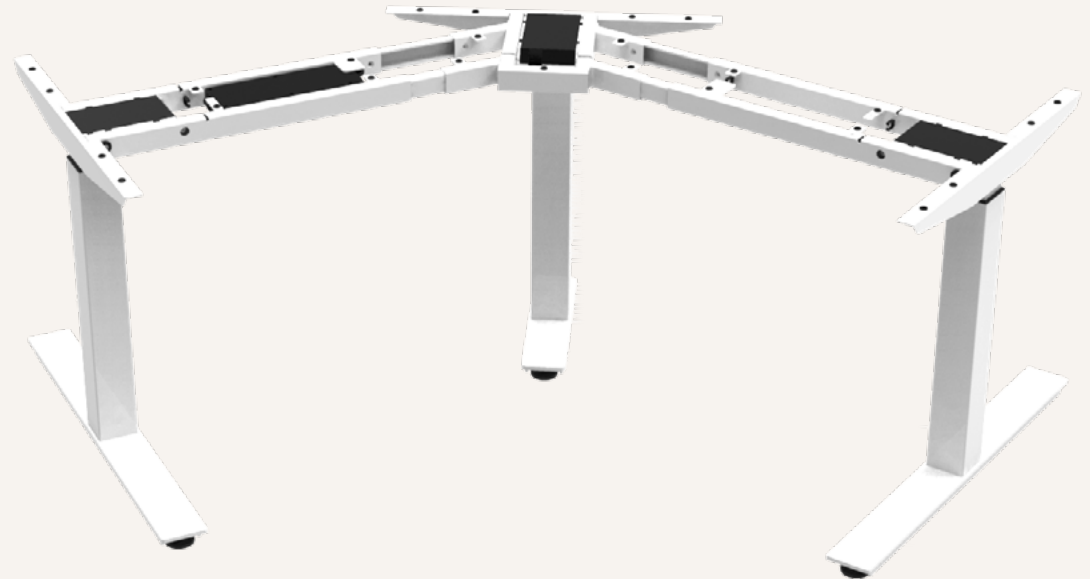
• Ergo Motion

General Features

Frame Orientation	120° Shape
Maximum Load	120 or 150 kg
Constant Speed (<80Kg)	3 Stage Column 40mm/s 2 Stage Column 33mm/s
Weight of TEK09 Package	62 Kg* *The actual weight of package may vary due to customer's selection of components.
Accessories (optional)	Enhanced anti-collision feature with t-touch, TFA1/3, TWC
Low Standby Power	<0.1W
Multiple column and control options	
High strength and stability – Steel construction	
Modular design – Easily change the TEK01 rectangular desk frame into the 120° configuration	

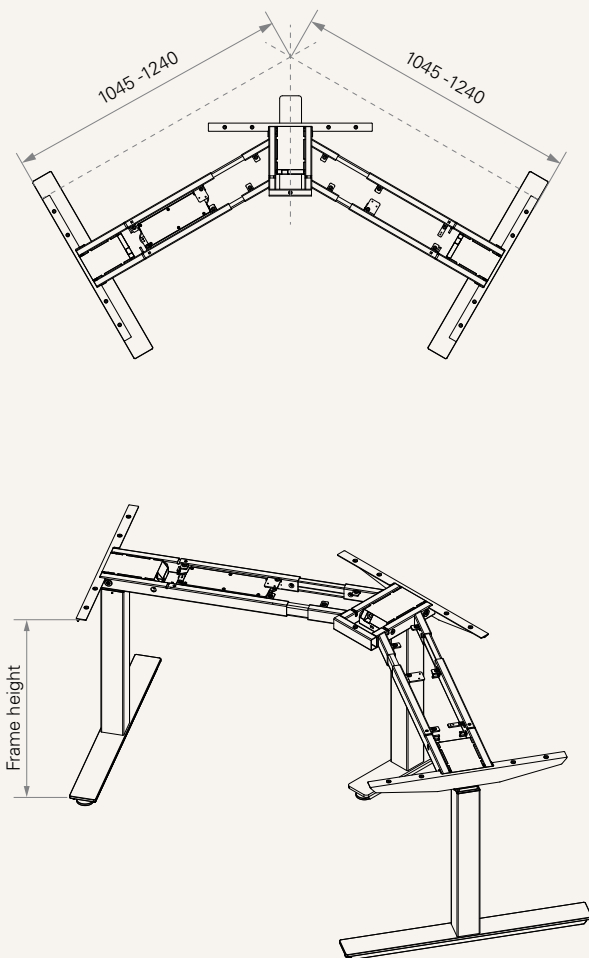
Color (RAL Classic)

 RAL9005  RAL9006  RAL9016  RAL9022



Drawing

Dimensions



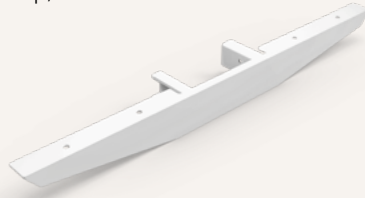
Frame Dimensions	Recommended Work Surface Dimensions	
	Width (mm)	Depth (mm)
1045~1240	1070~1265	700~900

Column Type	Frame Height (mm)	Stroke (mm)
3-Stage	630~1280	650
3-Stage (M)	600~1260	660
3-Stage (S)	560~1220	660
2-Stage	680~1180	500

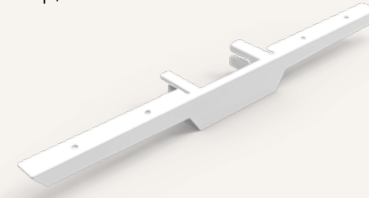
End Pipes



Style A
(for fixed tabletop)



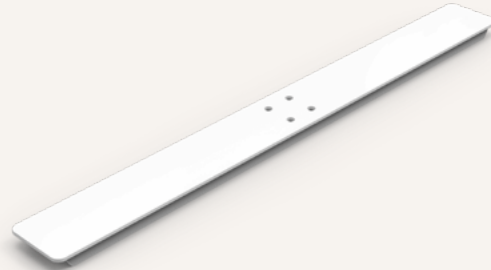
Style B
(for fixed tabletop)



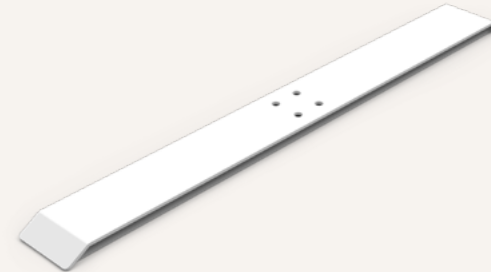
Foot



Style A



Style B

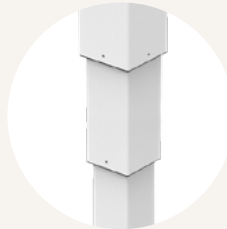


Lifting Columns

• 3-Stage



TL4
Square
70 x 70 mm



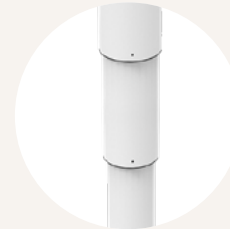
TL7
Square
70 x 70 mm



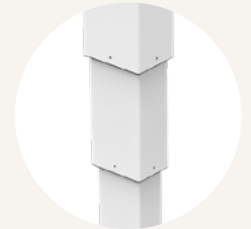
TL9
Round
ø70 mm



TL10
Rectangular
80 x 60 mm



TL11
Round
ø70 mm



TL12
Rectangular
80 x 60 mm

• 2-Stage



TL13
Square
70 x 70 mm



TL14
Round
ø70 mm



TL15
Rectangular
80 x 60 mm



TL26
Rectangular
80 x 60 mm

Hand Control



1 = TH37



2 = TFH8



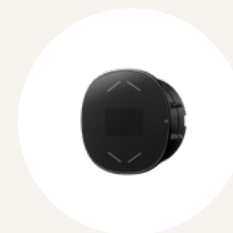
3 = TDH1



4 = TDH2



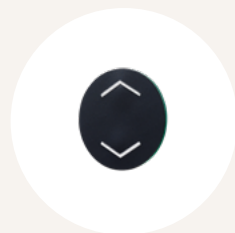
5 = TDH3



6 = TDH4



7 = TDH5



9 = TFH13



B = TH14



C = TFH21



D = TDH8P

Accessories (optional)



TCS1

TCS1 is a collision sensor based on t-touch technology which does not require any additional hardware upgrades.



TFA1

A charger with 2 USB ports.
Can be mounted on the table top.



TFA3

A charger with 2 USB ports.
Can be mounted to the desk front side.



TWC

Designed for wireless charging of mobile devices.
Can be mounted on the table top.

TEK09 Ordering Key

TEK09

Version: 20180120-C

TL Model See page 4	04 = TL4 07 = TL7	09 = TL9 10 = TL10	11 = TL11 12 = TL12	13 = TL13 14 = TL14	15 = TL15 26 = TL26
Foot (mm) See page 3	1= Style A, thickness 5, F1 & F2: 750, Standard		2 = Style B, thickness 5, F1 & F2: 750		
Color	1 = Black (RAL 9005)	2 = Grey (RAL 9006)	3 = White (RAL 9016)	4 = Special grey (RAL 9022)	
TC Model	2 = TC16				
Handset Model See page 5	1 = TH37 2 = TFH8	3 = TDH1 4 = TDH2	5 = TDH3 6 = TDH4	7 = TDH5 9 = TFH13	B = TH14 C = TFH21 D = TDH8P
End Pipe (mm) See page 3	1 = Style A, fixation holes, E1 & E2 & E3: 600, Standard		2 = Style B, fixation holes, E1 & E2 & E3: 600		
Desk Frame (mm)	1 = Normal, outer pipe 25*40, L1=L2: 1045-1240				

Terms of Use

The user is responsible for determining the suitability of TiMOTION products for a specific application.
TiMOTION products are subject to change without prior notice.